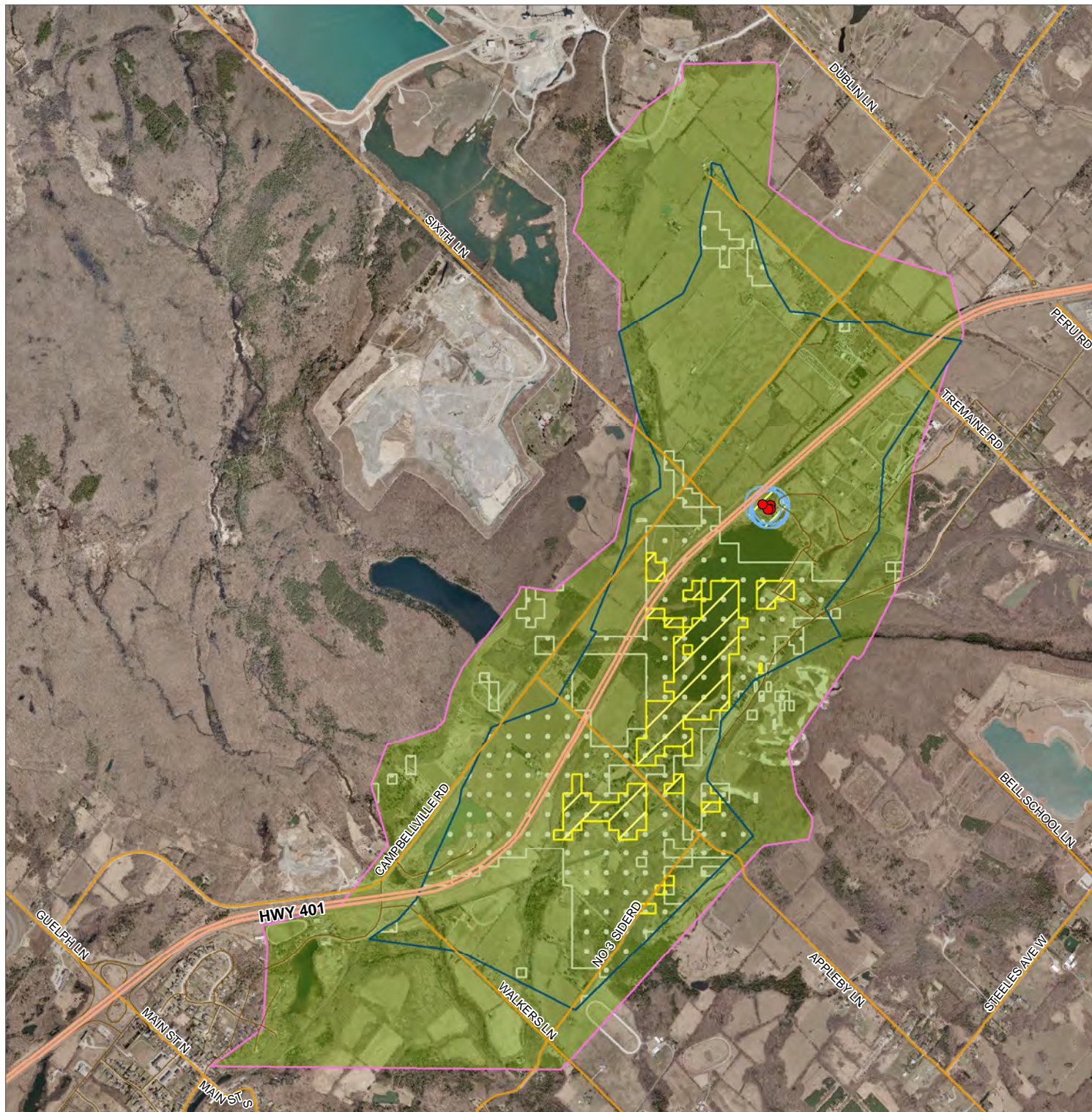


Figure 2 **Kelso**
Existing and would be significant groundwater threat areas



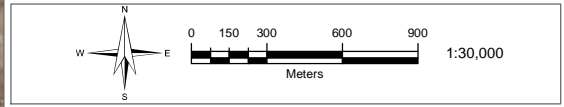
- Legend**
- WHPA Boundary
 - A
 - B
 - C
 - GW - Significant Threats - Group 1
 - GW - Significant Threats - Group 2
 - GW - Significant Threats - Group 3
 - Roads
 - Highway
 - Regional
 - Local
 - Municipal Well

- Group 1: (WHPA-A-10, WHPA-B-10)**
- Waste Disposal Site - Application of Untreated Septage to Land (Chemical and Pathogen)
 - Waste Disposal Site - Mine Tailings (Chemical)
 - Waste Disposal Site - Landfarming of Petroleum Refining Waste (Chemical)
 - Waste Disposal Site - Landfilling (Hazardous Waste) (Chemical)
 - Waste Disposal Site - PCB Waste Storage (Chemical)
 - Waste Disposal Site - Storage of Hazardous Waste at Disposal Site (Chemical)
 - Waste Disposal Site - Storage of Waste Clauses (p),(q),(r),(s),(t),(u) (Chemical)
 - Sewage - Discharge from stormwater retention pond (Chemical and Pathogen)
 - Sewage - Sanitary Sewers and Related Pipes (Chemical and Pathogen)
 - Sewage - Septic System (Chemical and Pathogen)
 - Sewage - Septic System Holding Tank (Chemical and Pathogen)
 - Sewage - Sewage Treatment Plant Effluent Discharges (Chemical and Pathogen)
 - Sewage - Storage of Sewage (Pathogen)
 - ASM - Application (Chemical and Pathogen)
 - ASM - Handling and Storage (Chemical and Pathogen)
 - NASM - Application (Chemical and Pathogen)
 - NASM - Handling and Storage (Chemical and Pathogen)
 - Commercial Fertilizer - Application (Chemical)
 - Commercial Fertilizer - Handling and Storage (Chemical)
 - Pesticides - Application (Chemical)
 - Pesticides - Handling and Storage (Chemical)
 - Road Salt - Application (Chemical)
 - Road Salt - Handling and Storage (Chemical)
 - Snow - Storage (Chemical)
 - Fuel - Handling and Storage (Chemical)
 - Organic Solvent - Handling and Storage (Chemical)
 - Runoff Management - Aircraft De-icing Chemicals (Chemical)
 - Use of land for livestock - Grazing and Pasturing (Chemical and Pathogen)
 - Use of land for livestock - Confinement Yard (Chemical and Pathogen)

- Group 2: (WHPA-A-10, WHPA-B-10, WHPA-B-8, WHPA-C-8)**
- Waste Disposal Site - Landfilling - Municipal Waste (Chemical)
 - Waste Disposal Site - Landfilling - Solid Non Hazardous Industrial or Commercial (Chemical)
 - Waste Disposal Site - Liquid Industrial Waste Injection Into Wells (Chemical)
 - Sewage - Storage of Sewage (Chemical)

- Group 3: (WHPA-A, WHPA-B, WHPA-C)**
- DNAPL - Handling and Storage

GW: Groundwater
 WHPA-A-10: Wellhead Protection Area A - Vulnerability Score of 10
 Reference: Prescribed threat circumstances as listed in the Ministry of the Environment Table of Drinking Water Threats (2009)
 Source: Conservation Halton
 Date: October 2011
 Projection: UTM NAD 83 Zone 17



This mapping is produced by Conservation Halton and should be used for information purposes only. The data displayed are derived from sources with varying accuracies and all boundaries should therefore be considered approximate. Data on this map is used under license with the Conservation Halton, Ontario Ministry of Natural Resources, Region of Halton, Ministry of Environment, Ontario Geological Survey, Natural Resources Canada, Teranet Enterprises Inc. and other agencies. Copyright 2010.