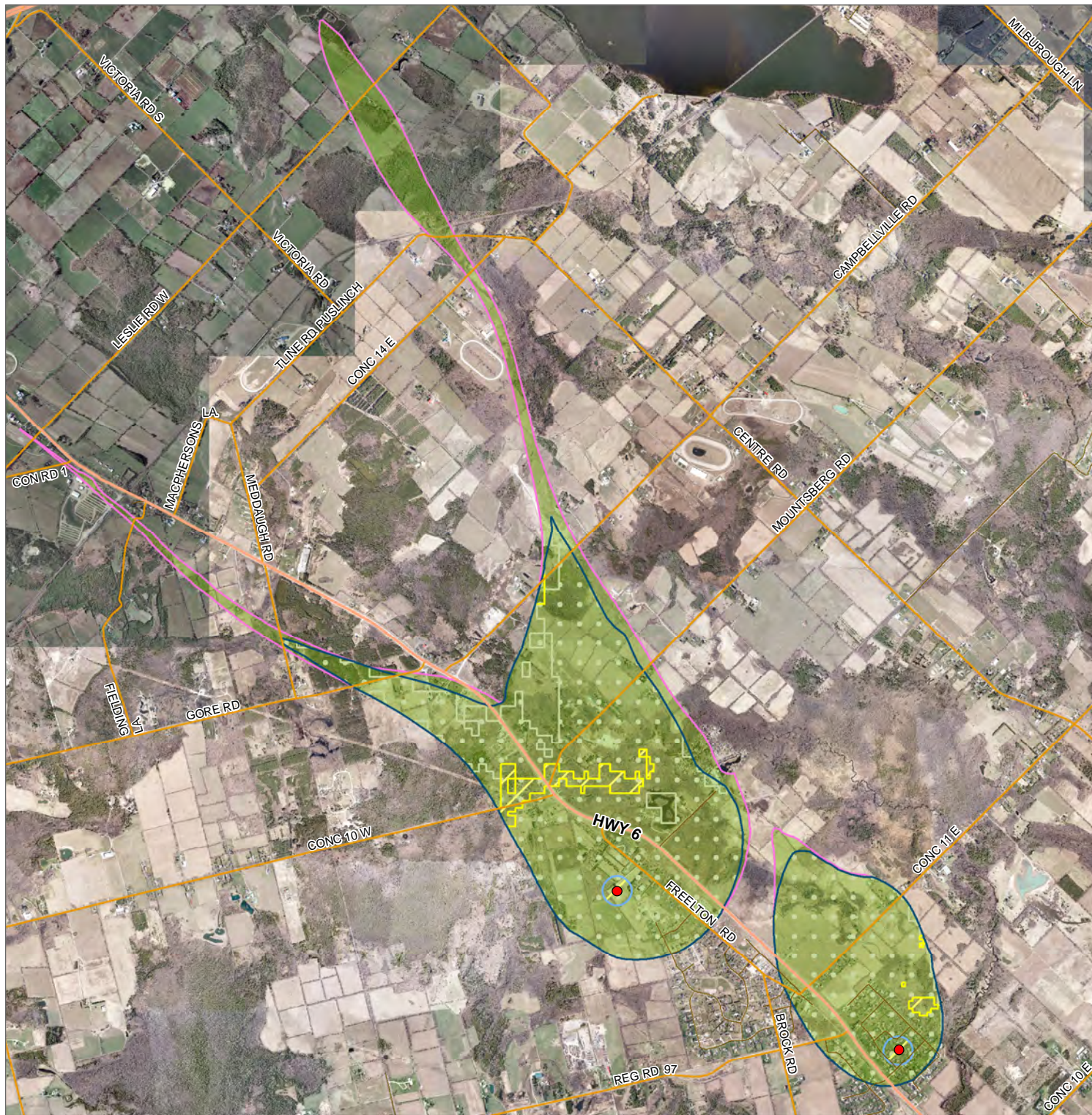


**Figure 5**  
**Freelton**  
**Existing and would be significant groundwater threat areas**



**Legend**

- WHPA Boundary
  - A
  - B
  - C
- GW - Significant Threats - Group 1
- GW - Significant Threats - Group 2
- GW - Significant Threats - Group 3
- Roads
  - Highway
  - Regional
  - Local
- Municipal Well

**Group 1: (WHPA-A-10, WHPA-B-10)**

- Waste Disposal Site - Application of Untreated Septage to Land (Chemical and Pathogen)
- Waste Disposal Site - Mine Tailings (Chemical)
- Waste Disposal Site - Landfarming of Petroleum Refining Waste (Chemical)
- Waste Disposal Site - Landfilling (Hazardous Waste) (Chemical)
- Waste Disposal Site - PCB Waste Storage (Chemical)
- Waste Disposal Site - Storage of Hazardous Waste at Disposal Site (Chemical)
- Waste Disposal Site - Storage of Waste Clauses (p),(q),(r),(s),(t),(u) (Chemical)
- Sewage - Discharge from stormwater retention pond (Chemical and Pathogen)
- Sewage - Sanitary Sewers and Related Pipes (Chemical and Pathogen)
- Sewage - Septic System (Chemical and Pathogen)
- Sewage - Septic System Holding Tank (Chemical and Pathogen)
- Sewage - Sewage Treatment Plant Effluent Discharges (Chemical and Pathogen)
- Sewage - Storage of Sewage (Pathogen)
- ASM - Application (Chemical and Pathogen)
- ASM - Handling and Storage (Chemical and Pathogen)
- NASM - Application (Chemical and Pathogen)
- NASM - Handling and Storage (Chemical and Pathogen)
- Commercial Fertilizer - Application (Chemical)
- Commercial Fertilizer - Handling and Storage (Chemical)
- Pesticides - Application (Chemical)
- Pesticides - Handling and Storage (Chemical)
- Road Salt - Application (Chemical)
- Road Salt - Handling and Storage (Chemical)
- Snow - Storage (Chemical)
- Fuel - Handling and Storage (Chemical)
- Organic Solvent - Handling and Storage (Chemical)
- Runoff Management - Aircraft De-icing Chemicals (Chemical)
- Use of land for livestock - Grazing and Pasturing (Chemical and Pathogen)
- Use of land for livestock - Confinement Yard (Chemical and Pathogen)

**Group 2: (WHPA-A-10, WHPA-B-10, WHPA-B-8, WHPA-C-8)**

- Waste Disposal Site - Landfilling - Municipal Waste (Chemical)
- Waste Disposal Site - Landfilling - Solid Non Hazardous Industrial or Commercial (Chemical)
- Waste Disposal Site - Liquid Industrial Waste Injection Into Wells (Chemical)
- Sewage - Storage of Sewage (Chemical)

**Group 3: (WHPA-A, WHPA-B, WHPA-C)**

- DNAPL - Handling and Storage
- GW: Groundwater
- WHPA-A-10: Wellhead Protection Area A - Vulnerability Score of 10

Reference: Prescribed threat circumstances as listed in the Ministry of the Environment Table of Drinking Water Threats (2009)

Source: Conservation Halton  
Date: October 2011  
Projection: UTM NAD 83 Zone 17

